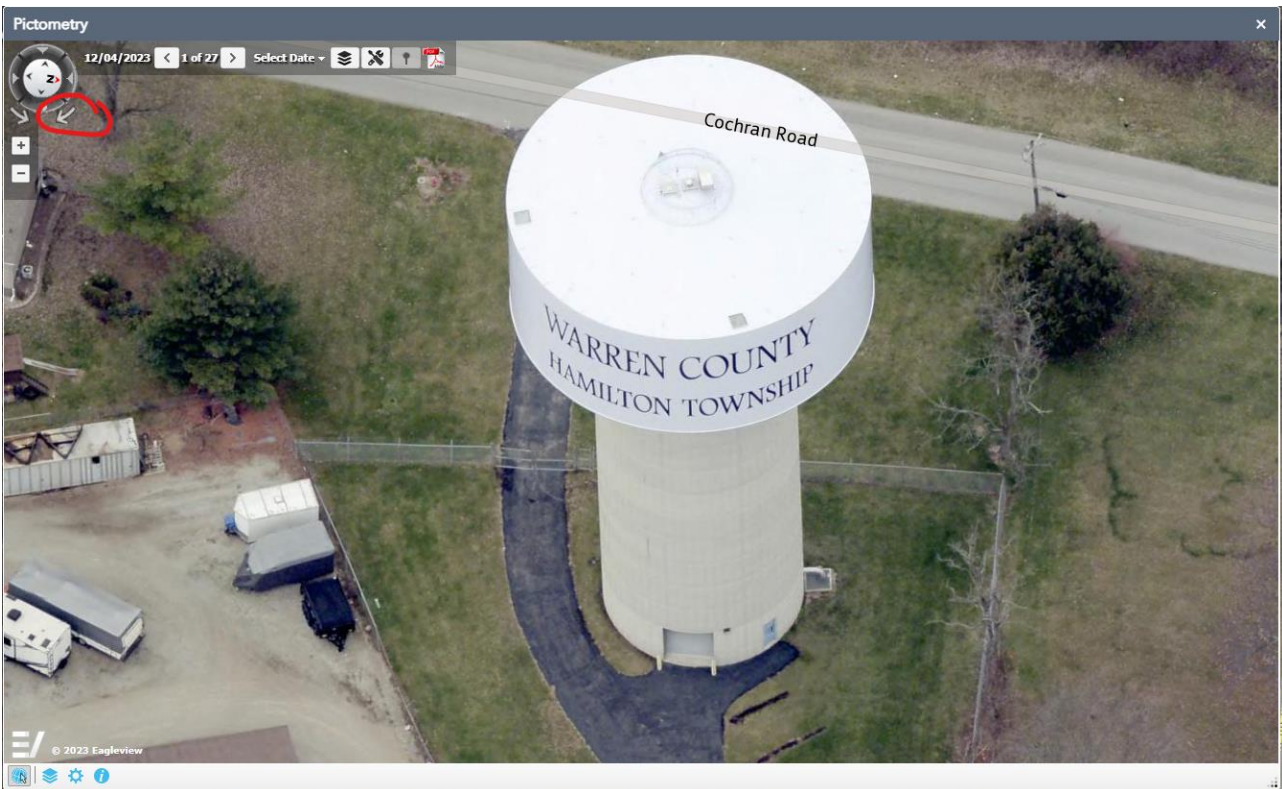
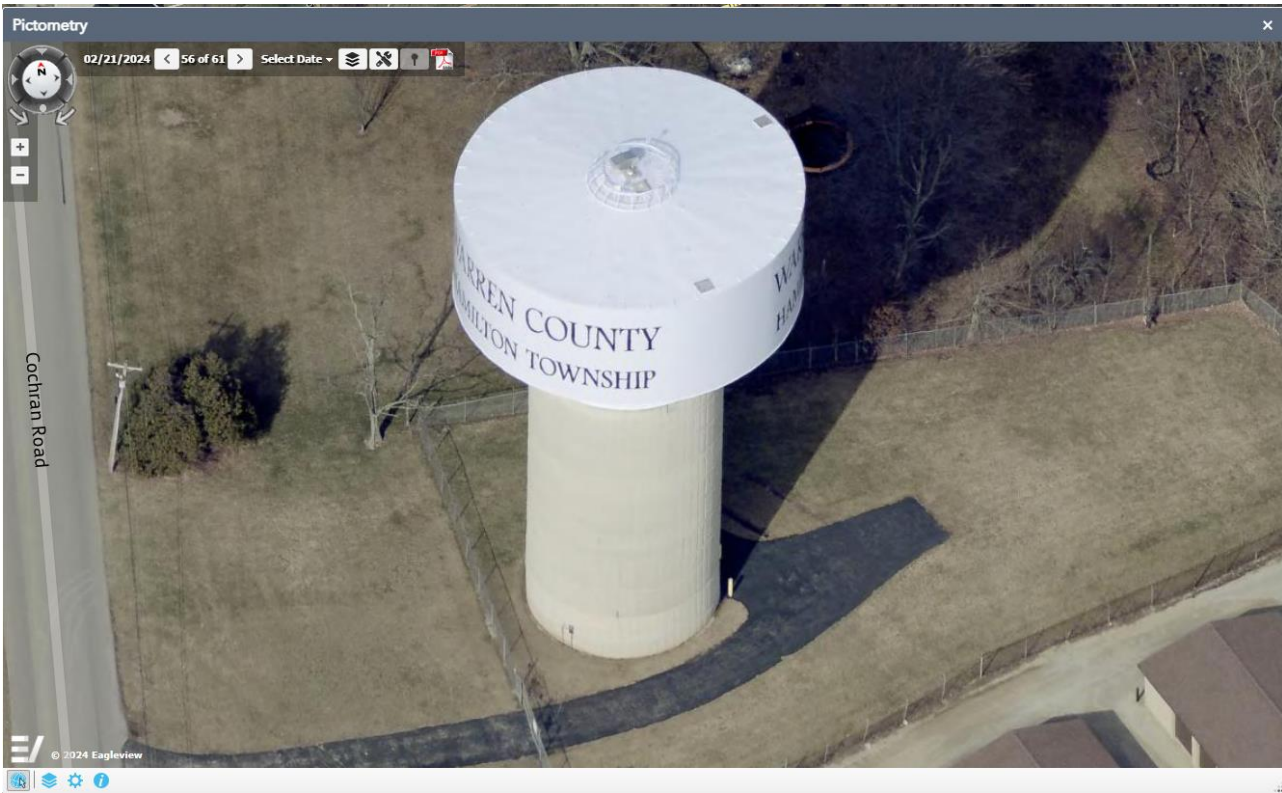
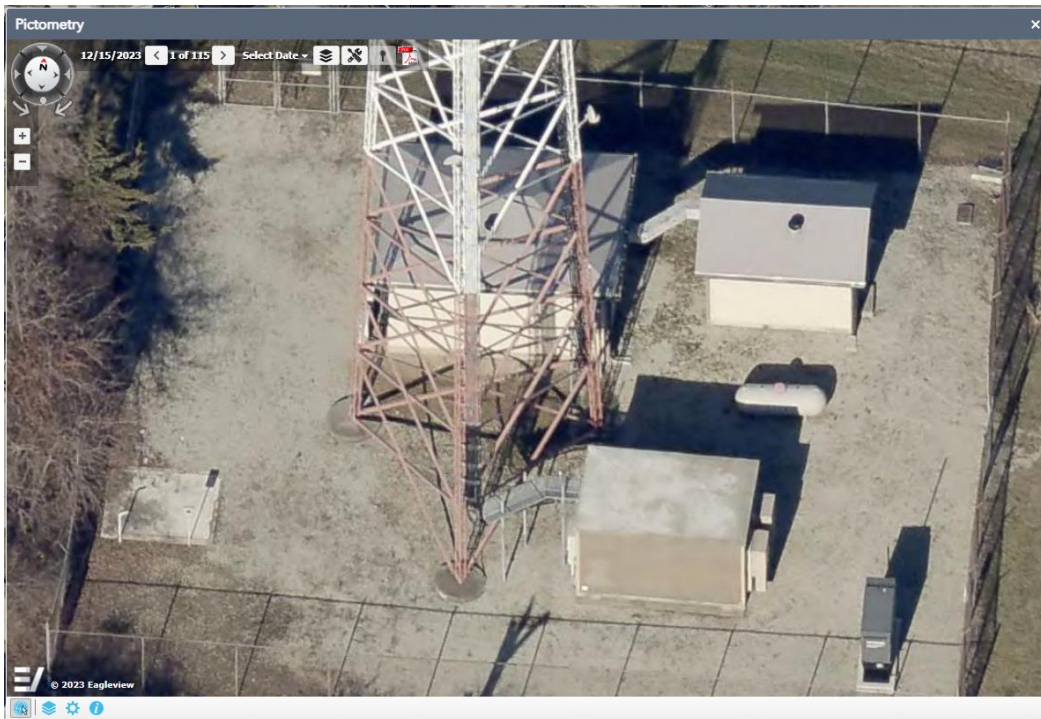
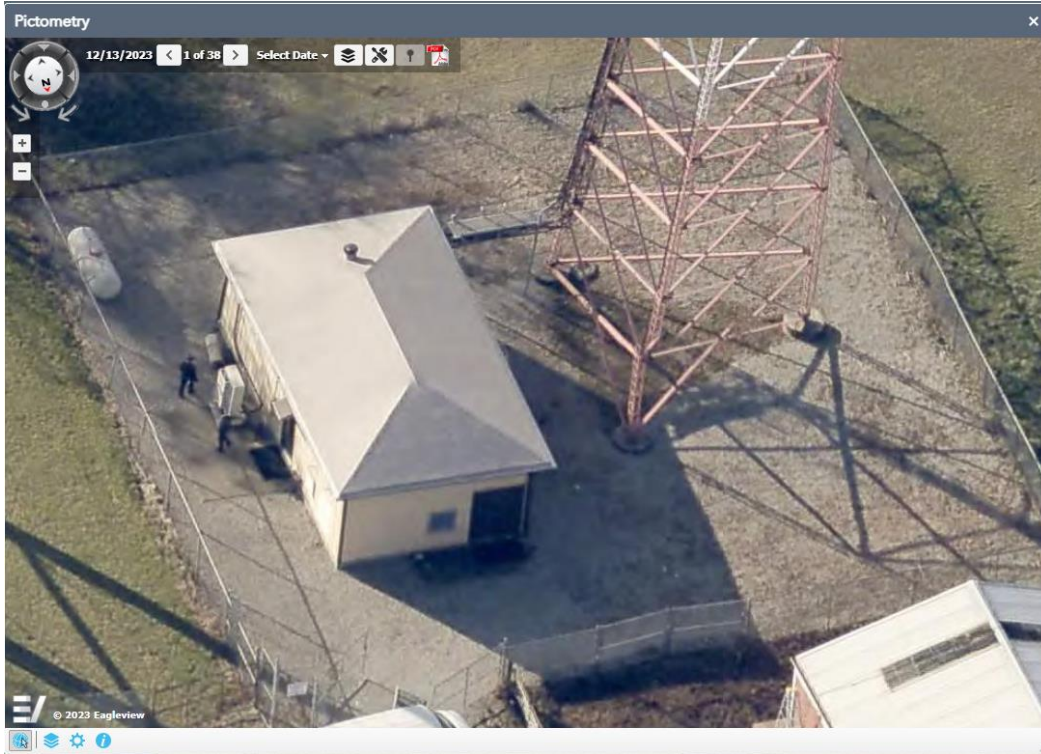


Pictometry View Angles:



- b. A few things to keep in mind:
 - i. Telecom tower sites are requesting 360 degree coverage with all new cameras. Buildings at each Telecom site are relatively small buildings with no interior walls. Please see attachments and Warren County GIS website for aerial photography as needed. Estimated camera counts are included per site, but Vendors can suggest whatever they feel necessary based on the information provided. For example:



- ii. Main Facilities camera locations are all existing cameras (Vendor can bid to use existing and/or to replace or submit multiple proposals with various configurations).
 - iii. Water site cameras are all new exterior cameras. Vendors can attend the site visit or use the Warren County GIS website to see these locations.
- 3. Question: How many viewing stations does Juvenile need?
 - a. Answer: 3 Viewing stations. The County will plan on reusing the existing PCs/Workstations for each viewing station.
- 4. Question: What user counts are needed for mobile viewing? (e.g. to view cameras from a cell phone)
 - a. Answer:
 - i. Tower Sites – Unlimited users, but up to 6 concurrently.
 - ii. Water Sites – Unlimited users, but up to 6 concurrently.
 - iii. Main Facilities - None
- 5. Question: Are there any needs for anti-ligature cameras?
 - a. Answer: No; no cameras are within reach where this would be applicable.
- 6. Question: Can you provide clarification on recording and retention needs?
 - a. Answer: The County would ideally like to see this priced out as two options if there is a cost difference
 - i. 24 hours a day and 30 day retention across the board for every camera
 - ii. 24 hours a day, but 30 day retention for Juvenile cameras and 21 day retention for all other cameras
- 7. Question: For the cameras the county estimates it would need, listed on the chart on page 8-9 of the RFP, Do you know which of those are going to be indoor versus outdoor locations?
 - a. Answer:
 - i. Telecom Towers
 - 1. Counts will depend on what the Vendor suggests (e.g. different cameras may have different viewing capabilities so the count is hard to determine
 - ii. Water Sites
 - 1. All cameras are outdoors
 - iii. Main Facilities
 - 1. 87 of the existing cameras are outdoors
- 8. Question: For the cameras the county estimates it would need, listed on the chart on page 8-9 of the RFP, Do you know how many of those are new locations requiring a new data cable install?
 - a. Answer:
 - i. Telecom Towers
 - 1. All locations will require new data cable
 - ii. Water Sites
 - 1. Existing feeds are POE and will be reviewed at the site visit
 - iii. Main Facilities
 - 1. All locations have existing cameras that have existing data cable
- 9. Question: Will each location require an archiver?
 - a. Answer: Based on the system selected, Telecom may elect to have an archiver at each location. This should be priced at an option.
- 10. Question: Will contractors need to work outside of regular business hours in any sensitive locations?
 - a. Answer: The County prefers contractors to be onsite during typical business hours, but certain areas may only be accessible during specific days/times. E.g. no work in a courtroom while court is in session.

11. Misc: Other questions asked about specific needs should be answered based on the vendor's recommendations
 - a. The County is looking for Vendors to take the information they have and as the experts in this subject matter, put together a proposal where they suggest whatever hardware and configuration that they best feel meets the County's use cases (unless specifically stated as a requirement in the RFP document or subsequent addendums). Vendors are welcome to submit multiple proposals with different configurations.
 - i. Examples:
 1. Camera Heights
 2. Number and location of servers
 3. Frames per second
 4. Exact number of cameras
 5. Etc.

Attachments: Tower Sites

Note that links to the online GIS map will take you to the general area where the tower site is, user may need to pan around or zoom in to the actual tower site pictured.



Approximate GIS Online Map Location:

<https://maps.co.warren.oh.us/wcgis/webmap/index.html?config=auditor.json&esearch=3515273&slayer=0>



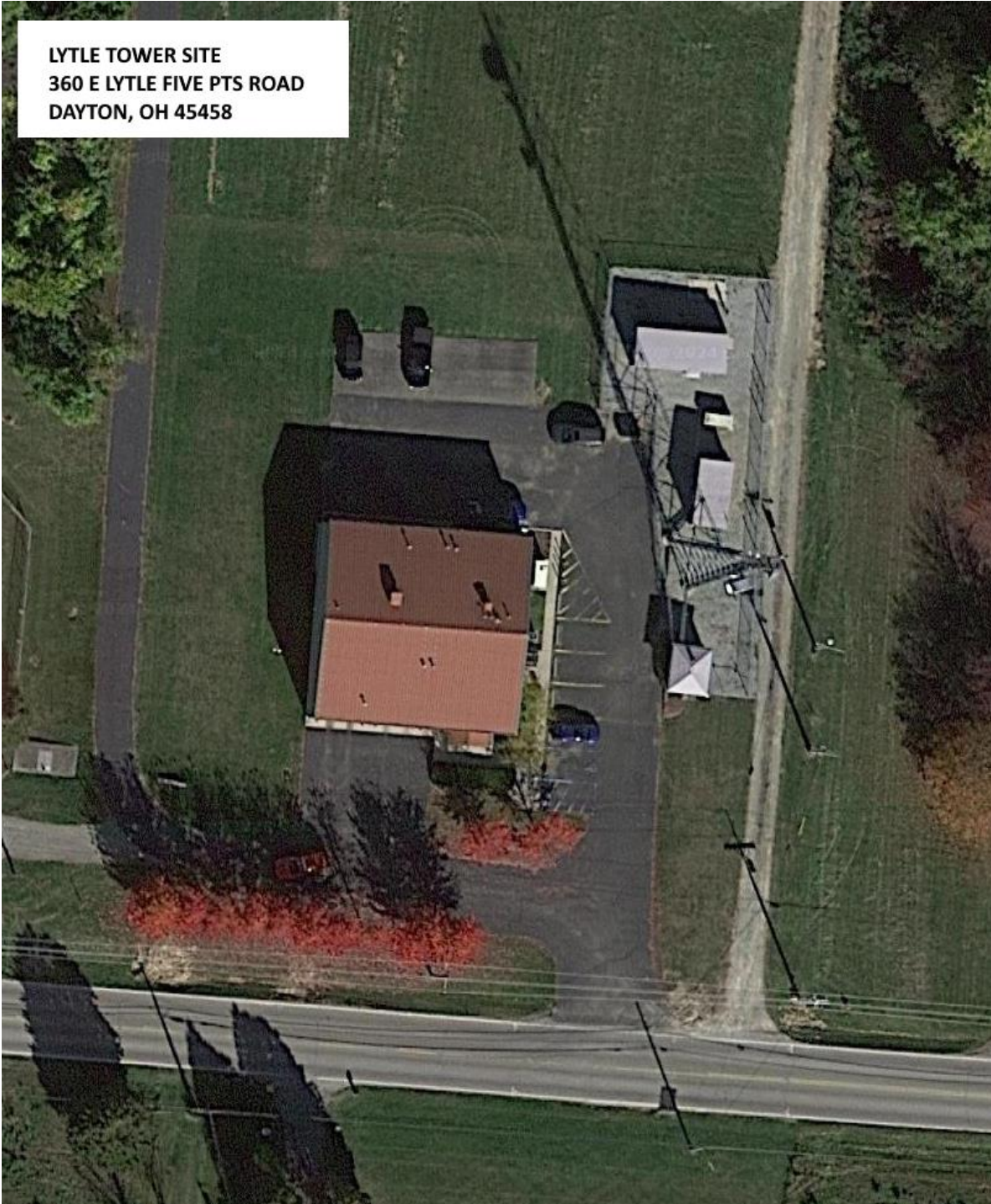
Approximate GIS Online Map Location:

<https://maps.co.warren.oh.us/wcgis/webmap/index.html?config=auditor.json&esearch=4400577&slayer=0>



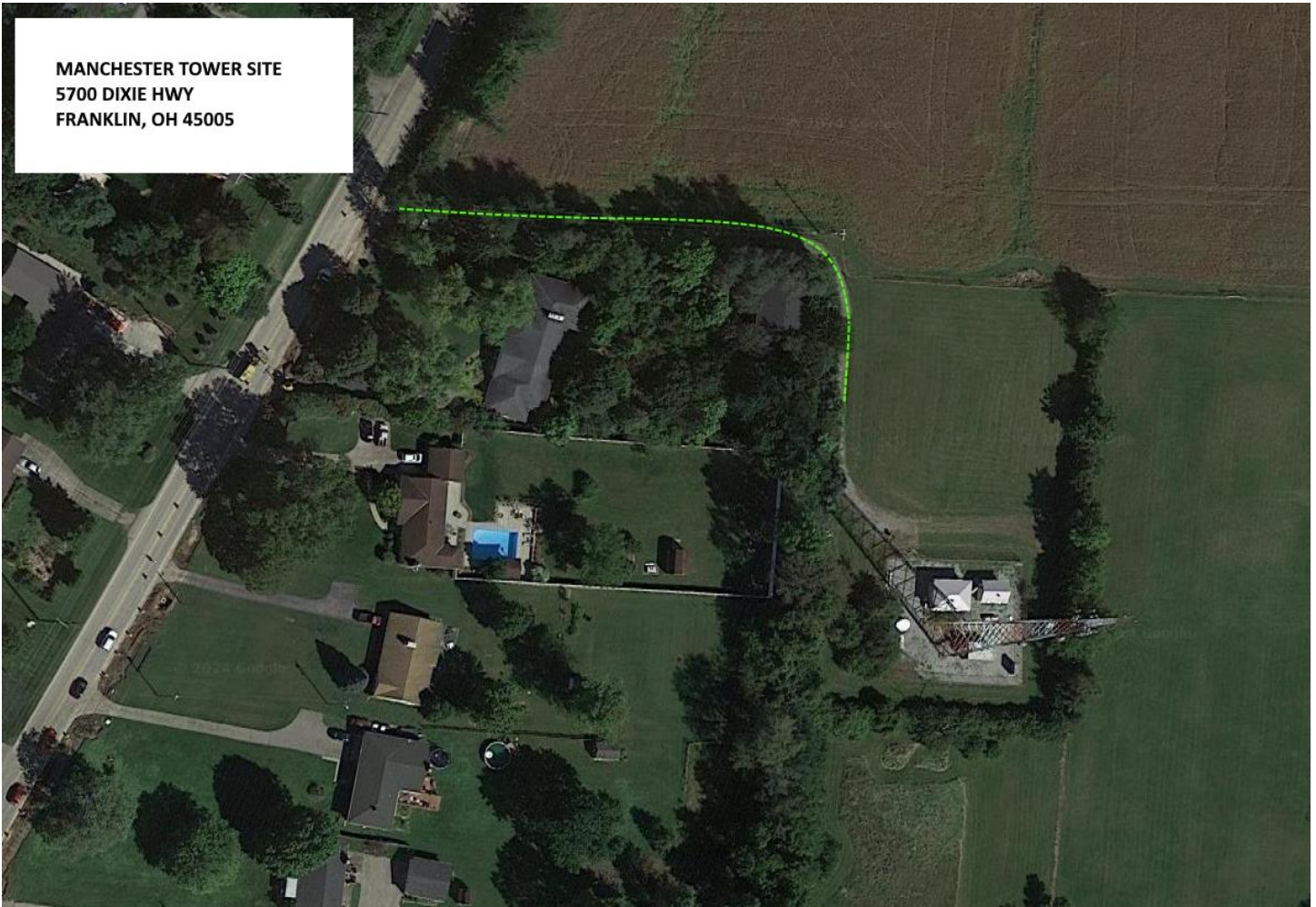
Approximate GIS Online Map Location:

<https://maps.co.warren.oh.us/wcgis/webmap/index.html?config=auditor.json&eSearch=5330580&slayer=0>



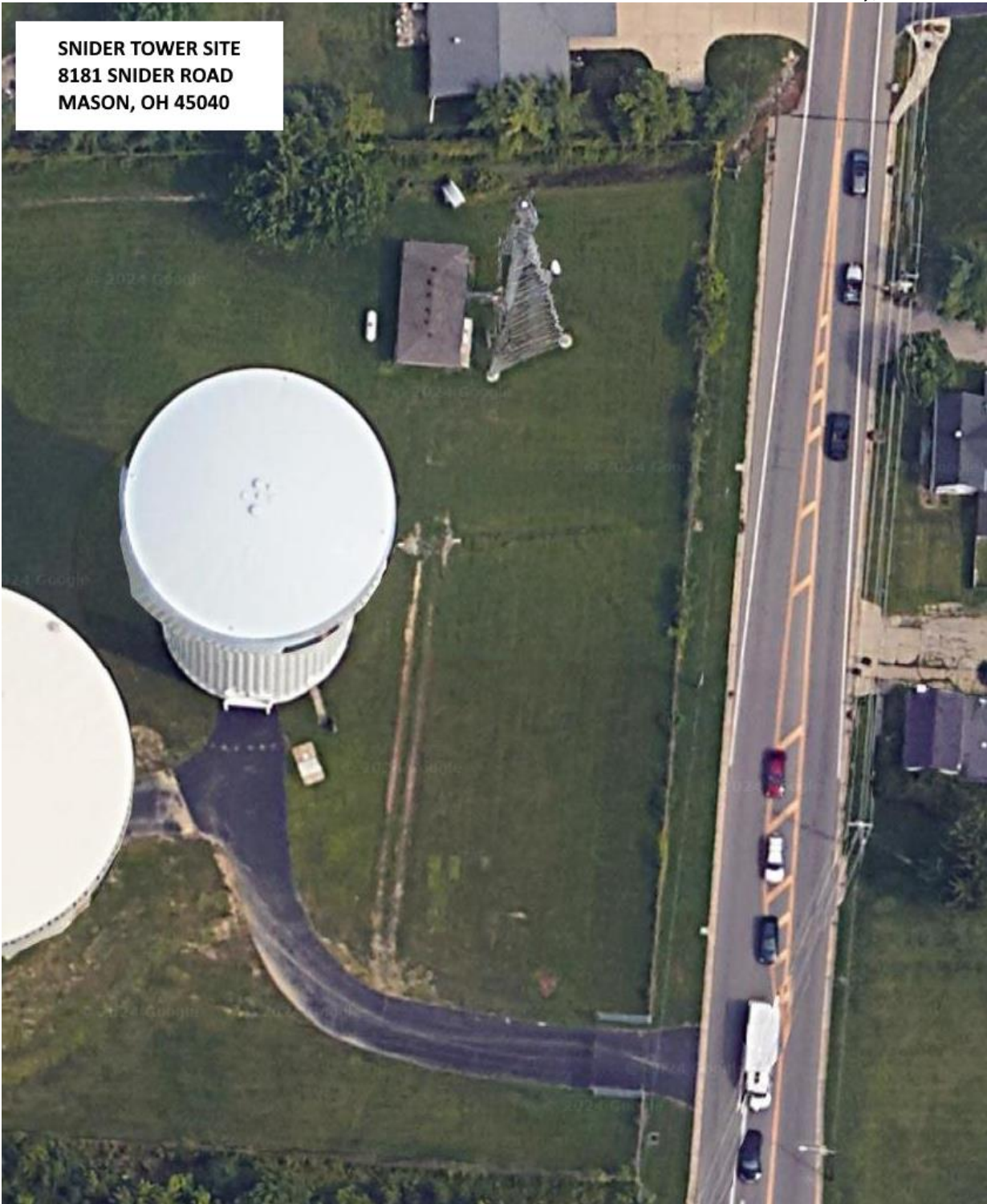
Approximate GIS Online Map Location:

<https://maps.co.warren.oh.us/wcgis/webmap/index.html?config=auditor.json&esearch=122327&slayer=0>



Approximate GIS Online Map Location:

<https://maps.co.warren.oh.us/wcgis/webmap/index.html?config=auditor.json&research=1432729&slayer=0>

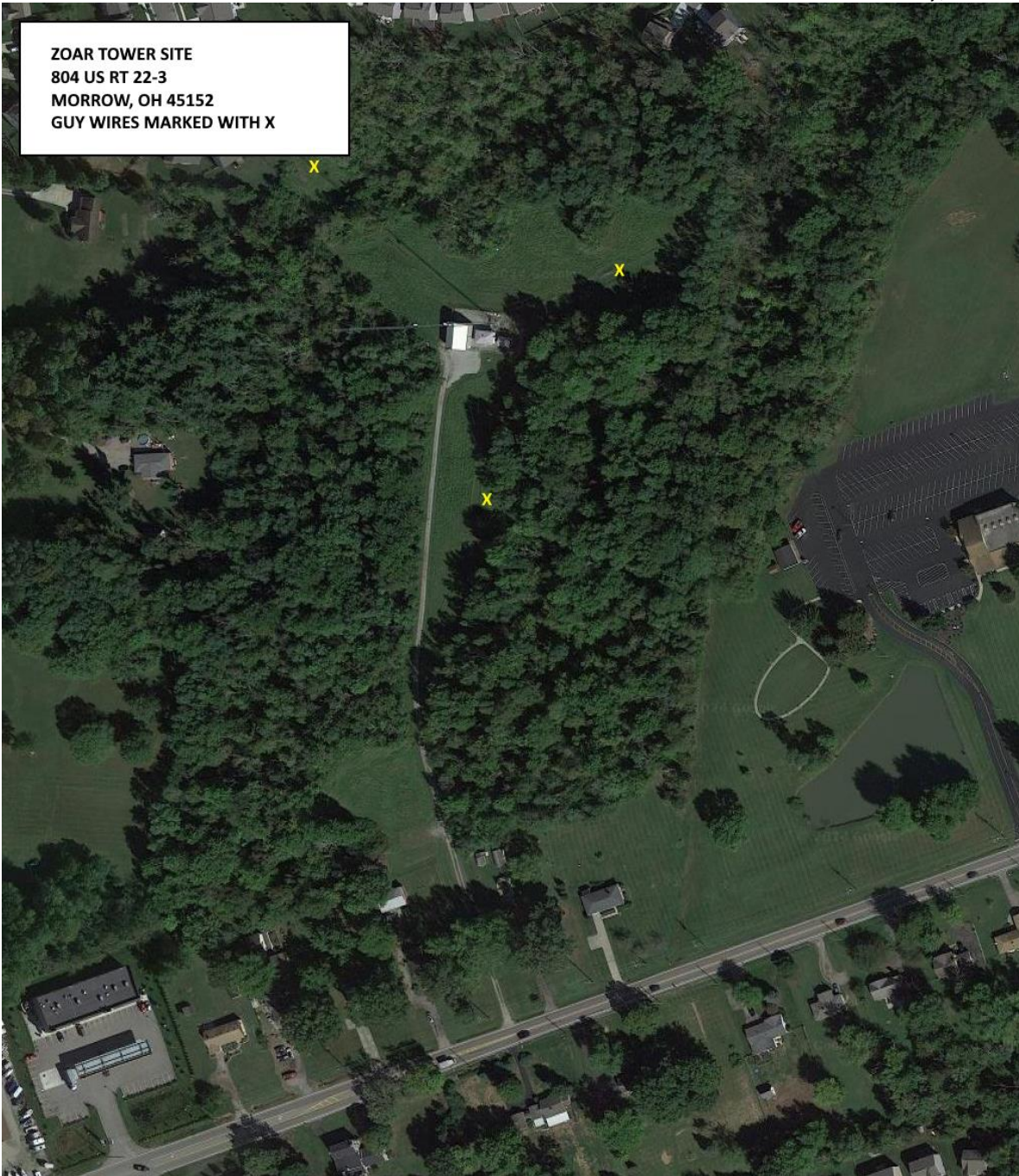


Approximate GIS Online Map Location:

<https://maps.co.warren.oh.us/wcgis/webmap/index.html?config=auditor.json&esearch=820151&slayer=0>



Approximate GIS Online Map Location: No link available – site is in the right of way between I-71, Wilmington Road, and the I-71 Ramp



Approximate GIS Online Map Location:

<https://maps.co.warren.oh.us/wcgis/webmap/index.html?config=auditor.json&esearch=3400596&slayer=0>